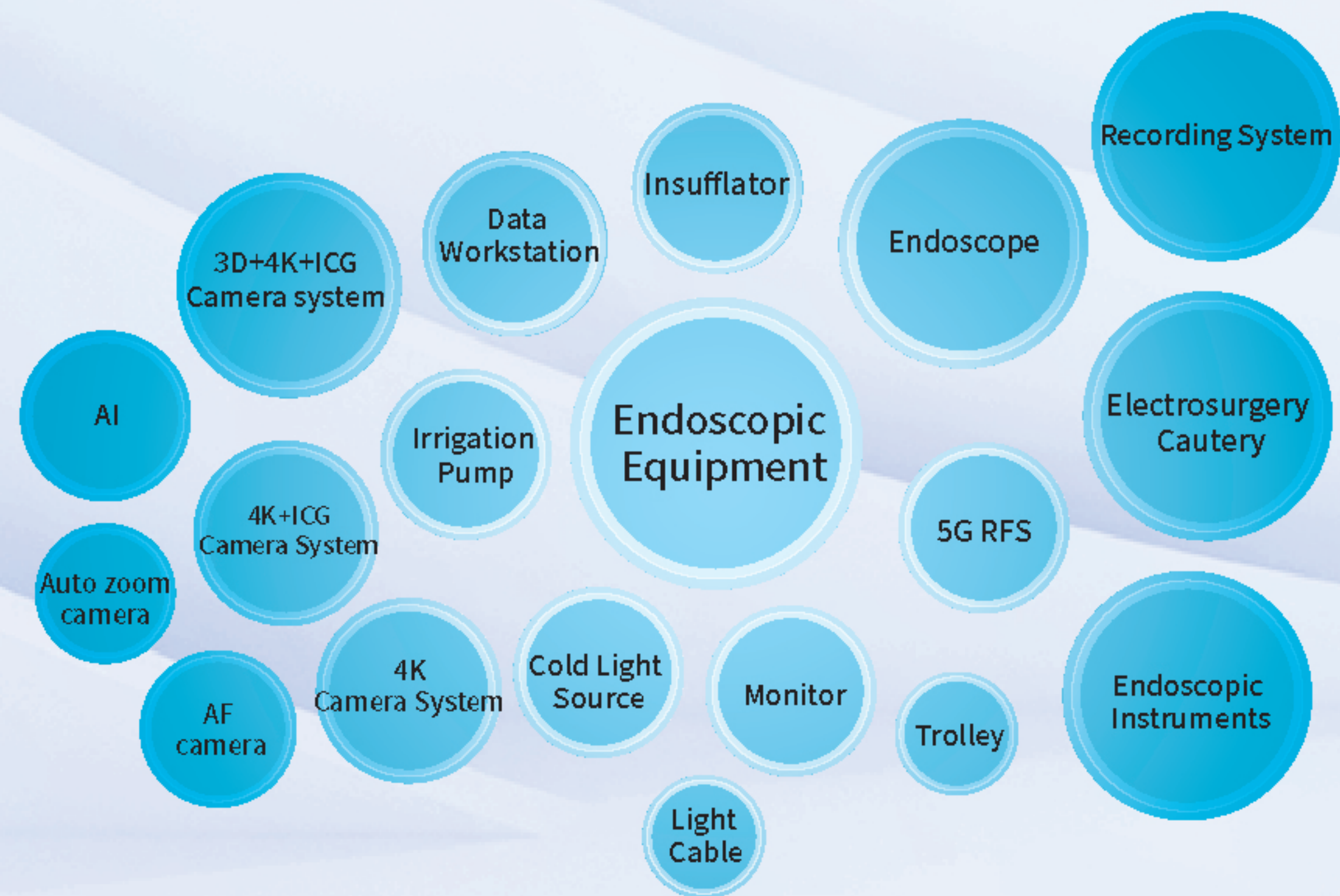


Endoscopic Camera system AI Empowers Precision Visualization



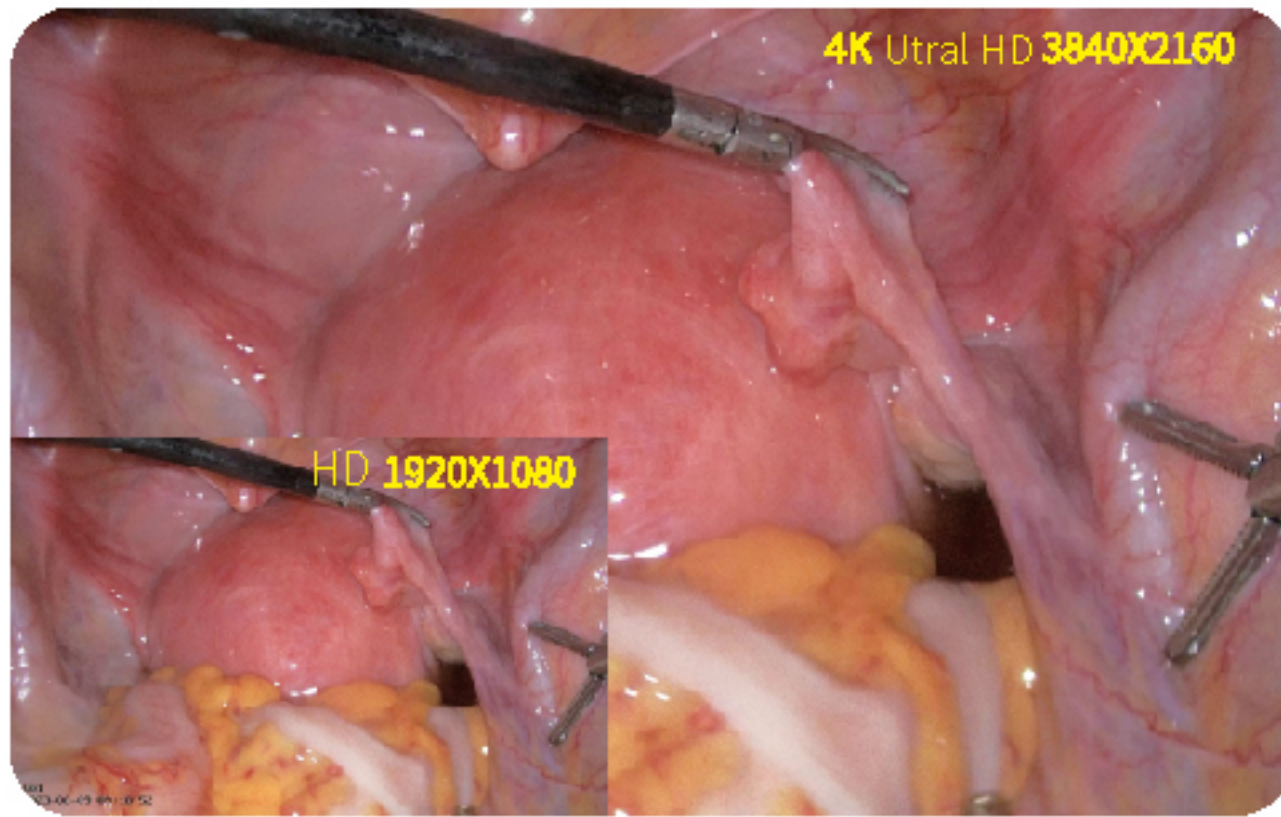
Comprehensive Endoscopic Surgery Solutions

Xinhua Surgical Instruments Co., Ltd.
Add: No.2779 Qixiang Road, Zibo New& Hi-tech Zone,
Zibo, Shandong province, China
Tel: 0533-3595351
Fax: 0533-3595352



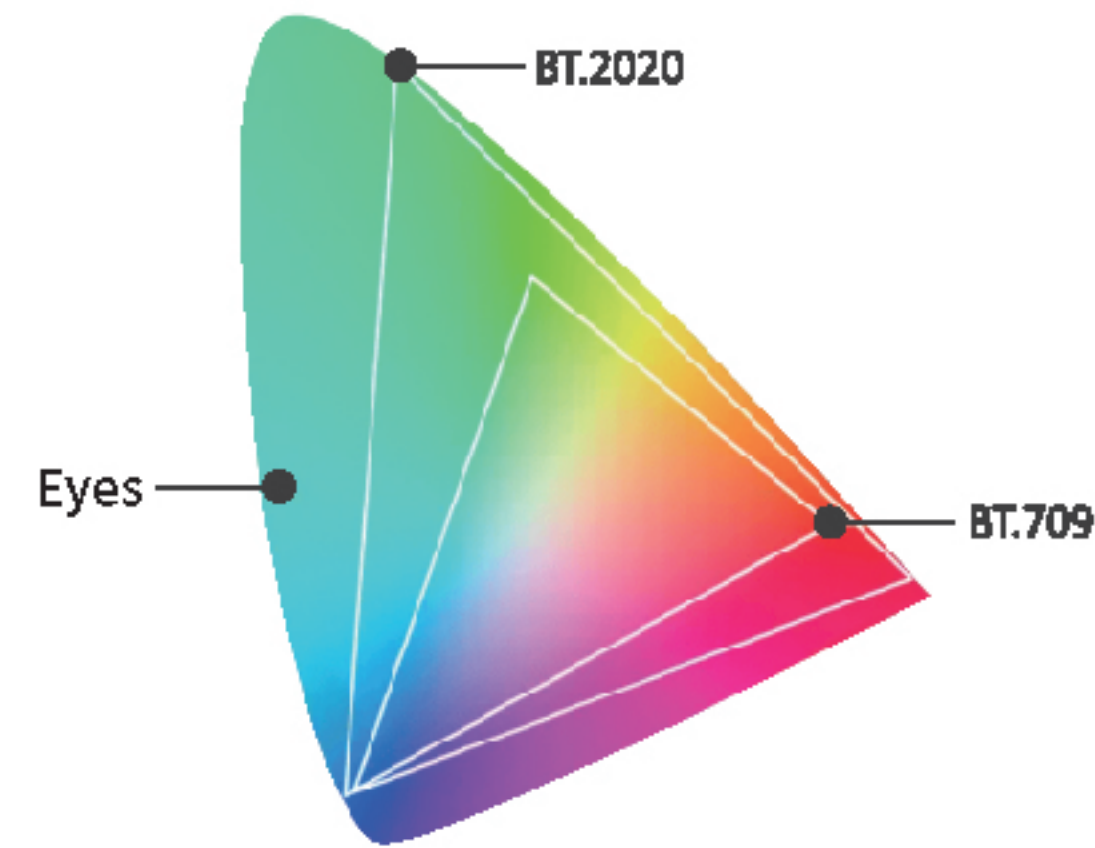
- Clear
- Excellent
- Precise
- Bright
- Intelligent
- Quick

4K Ultra HD for **clearer** images and more true-to-life colors



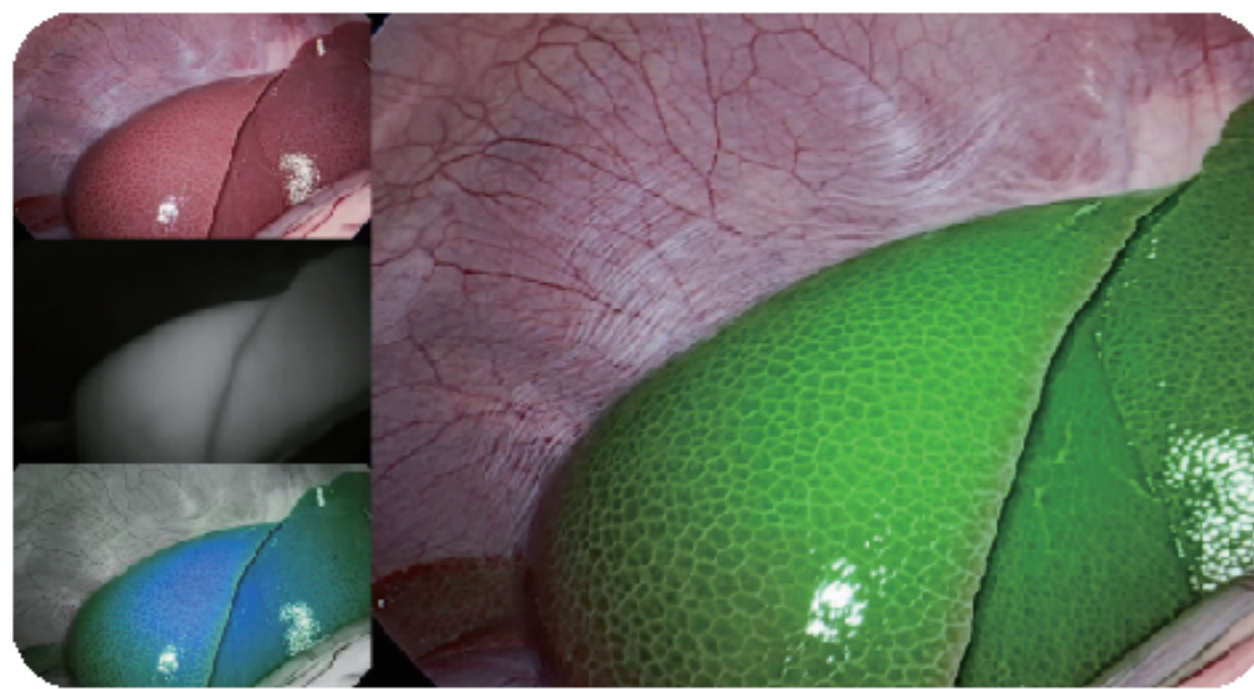
4K Ultra High-Definition Image

- 4K Ultra High Definition, supporting 3840 x 2160 and 4096 x 2160 resolutions, delivers an exceptionally clear surgical field



Full gamut wide dynamic range

- True-to-Life 4K imaging with Full Color Gamut and WDR reveals critical details.
- The BT.2020 standard ensures unparalleled color fidelity, empowering precise differentiation of micro vessels and abnormal tissue



4K CMOS ICG Camera

- Multi-Spectral Fluorescence Guidance: Real-Time Navigation for Precise Surgery



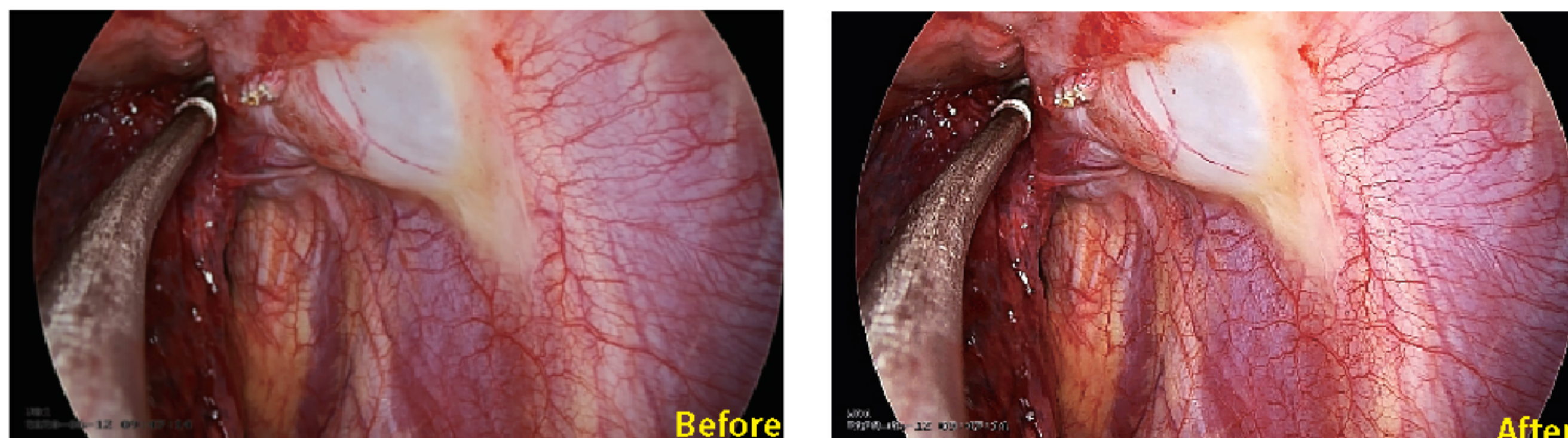
Navigate with Fluorescence Precision

- Fluorescence with Clinical Precision — Enhanced 3D Clarity for Confident Navigation

Multiple image processing algorithms deliver **Excellent** image quality

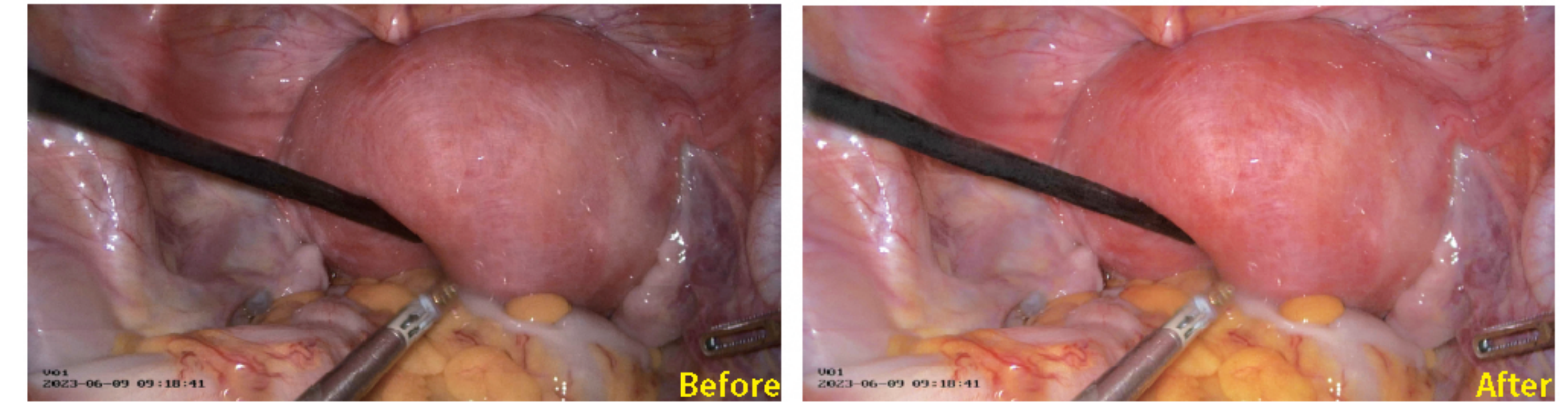
Detail filter

Highlight the vessels and reduce the risk of bleeding.



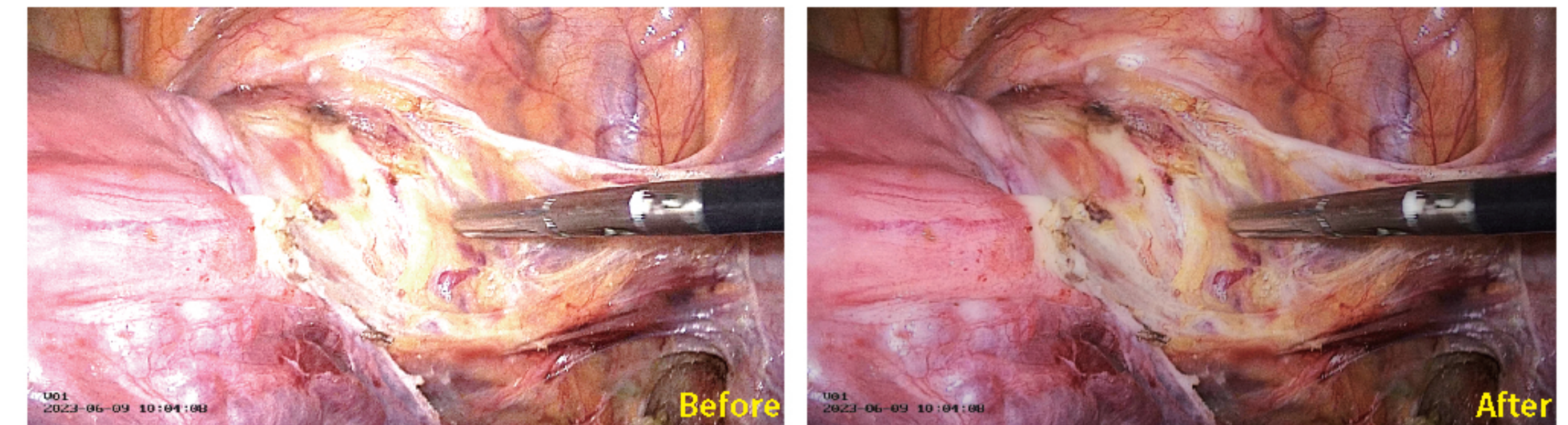
Dark improvement

Auto recognize dark area and improve it to ensure brighter surgical field.



High brightness suppression

Prevent overexposures and reflections to ensure homogeneous illumination.



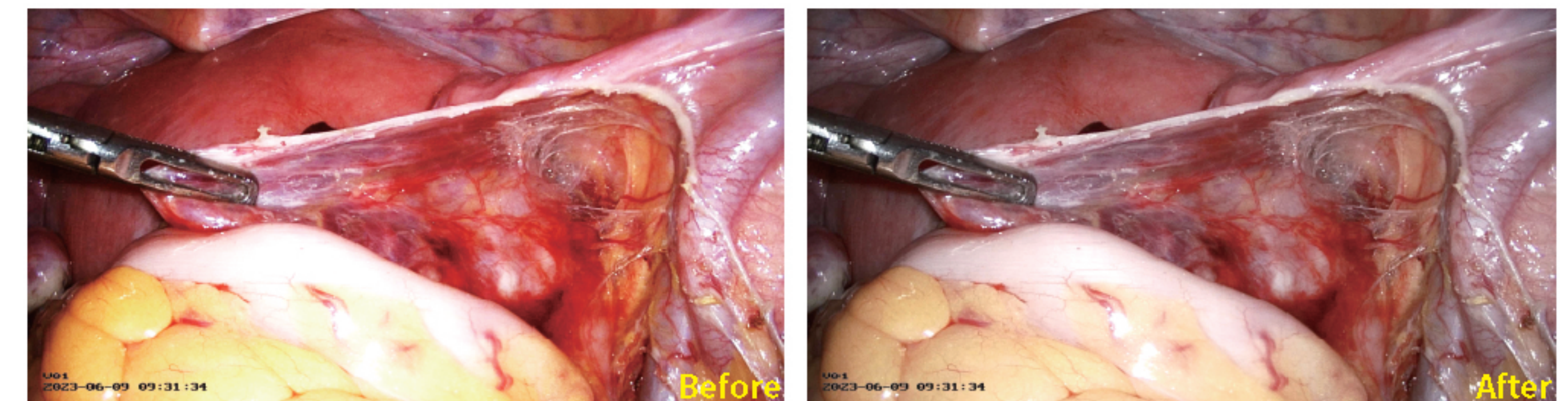
Intelligent defogging

Unveiling the veil in the surgical fields, intelligently enhancing visibility amidst smoke.

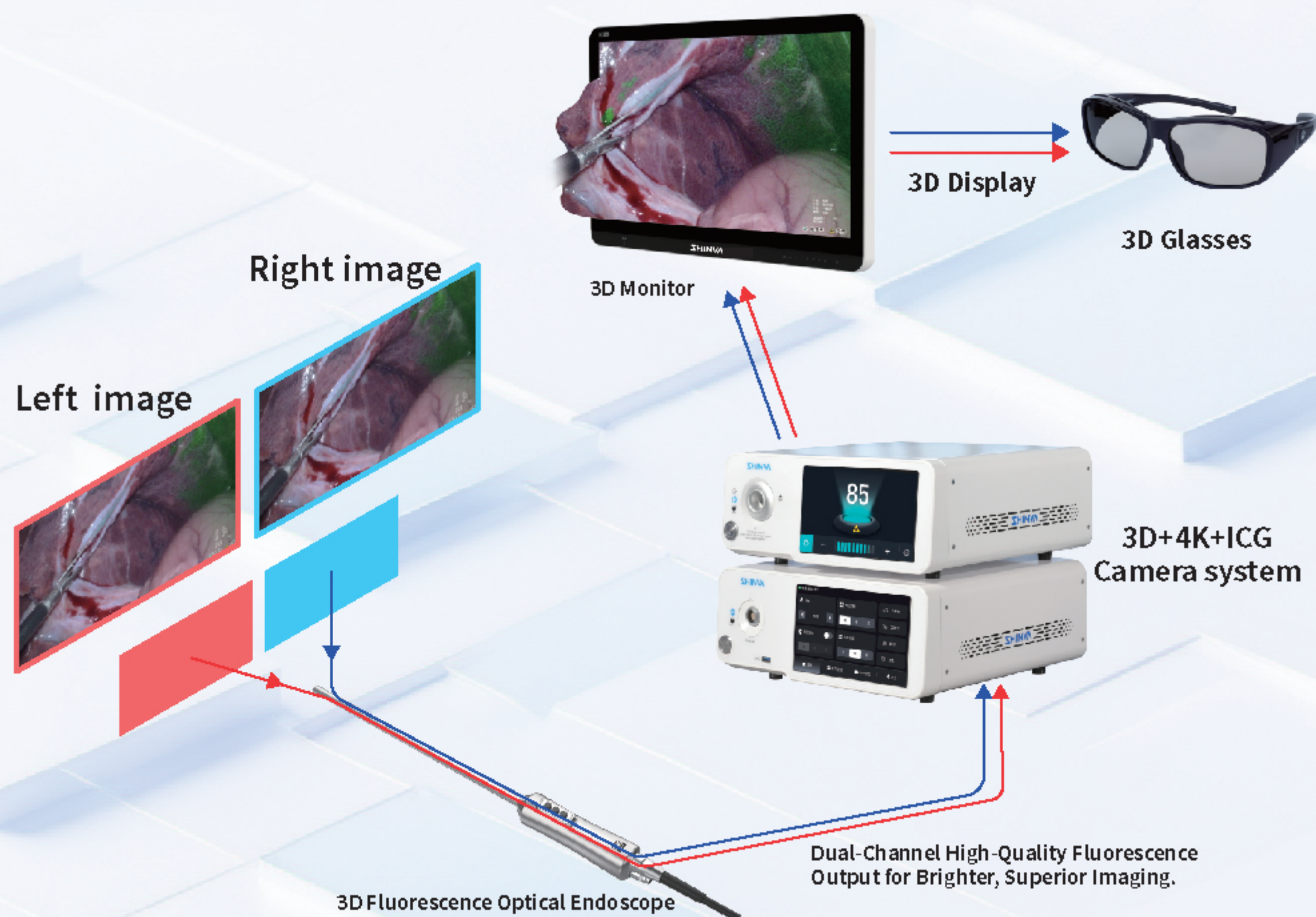


Anti-red overflow

Fade large area red blood scene, relieve visual fatigue.



3D+4K Fusion Imaging Algorithm enables true depth perception, empowering more **precise** surgery

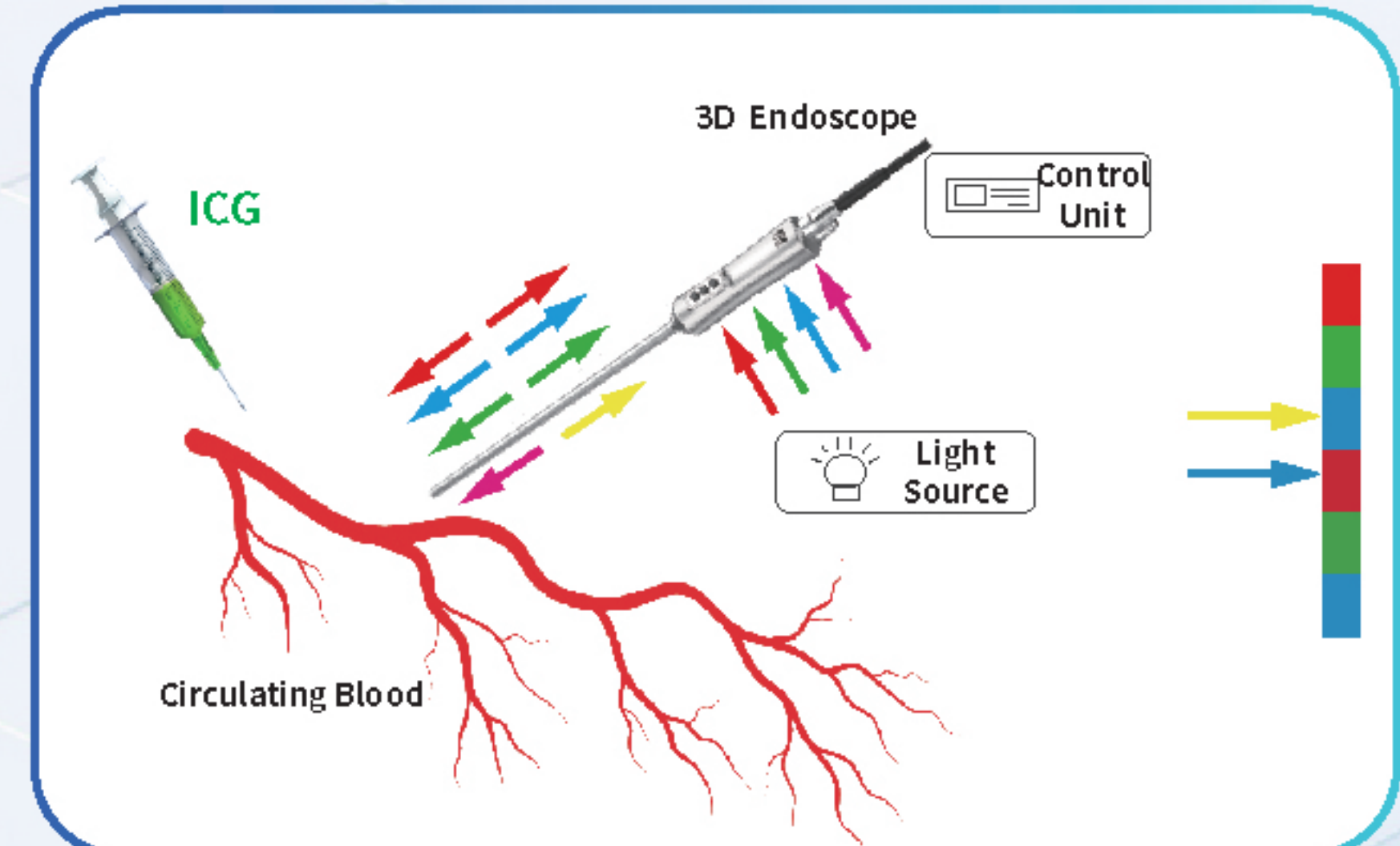
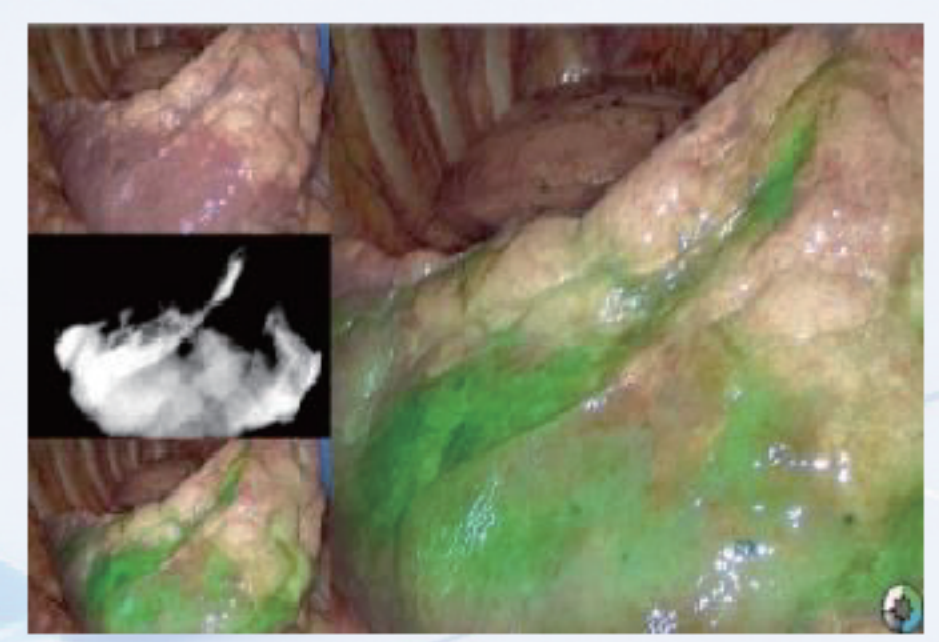


ICG (Indocyanine Green) Near-Infrared Fluorescence Technology enables **brighter** visualization of target tissues.

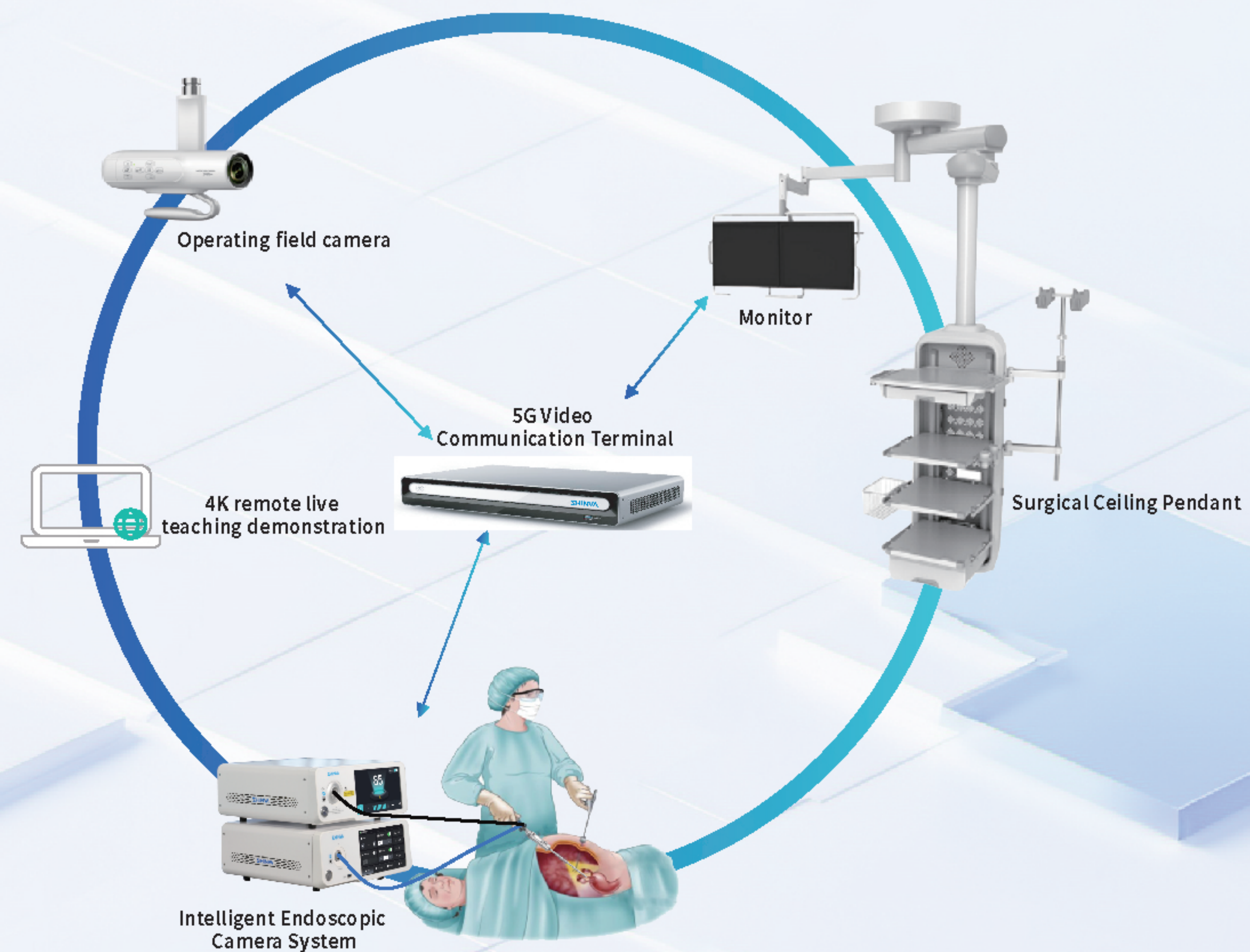
4K Ultra HD + Multi-Color Fluorescence

Fluorescence Imaging Technology

ICG fluorescence imaging technology clearly delineates tumor margins intraoperatively, assisting surgeons in achieving precise resection



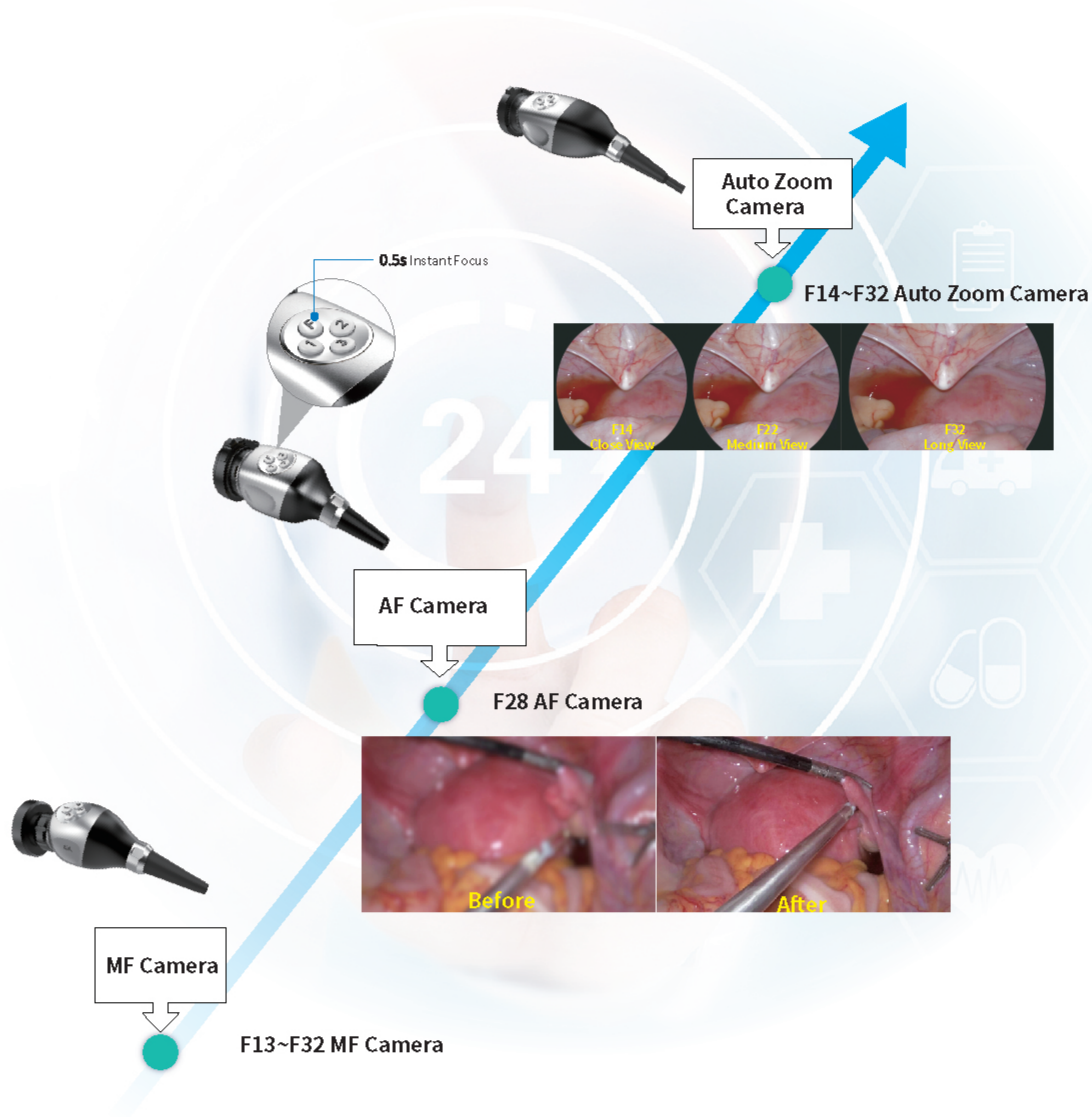
Minimally Invasive Surgery, Expanding Applications, Enhanced **Intelligence**



AI Voice AI Vision

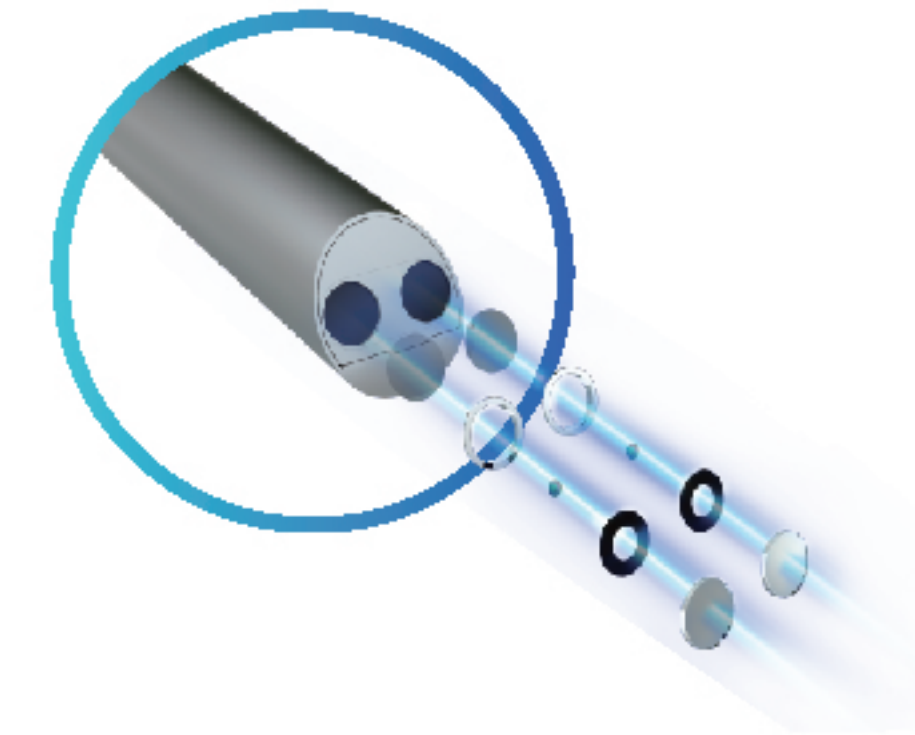
<p>Voice Control</p>	<p>Instrument Recognition and Tracking</p>	<p>Surgical Sponge Recognition and Tracking</p>	<p>Nerve Recognition and Tracking</p>
----------------------	--	---	---------------------------------------

Full-Range Autofocus Camera for **Quick**, Clear Image Acquisition.



Large Depth of Field, No Need for Focus Adjustment;
Automatic Light Intensity Control for **Quicker**, More Efficient Operation.

Full-Range Autofocus Camera for Quick, Clear Image Acquisition

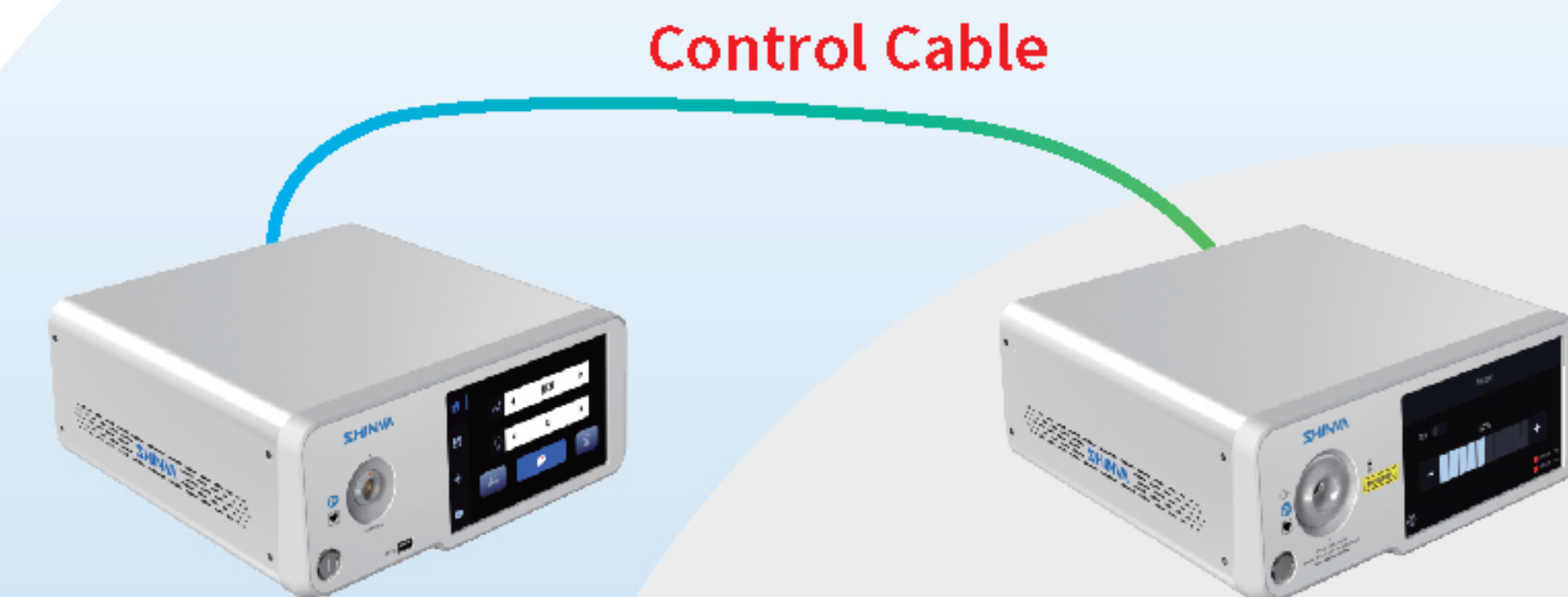


Large Depth of Field, Wide Viewing Angle, and No Need for Focus Adjustment — Delivering a Consistently Clear Field of View



Heated Distal-End Design effectively prevents smoke adhesion and reduces lens fogging

Adaptive Adjustment of Light Brightness and Pneumoperitoneum Pressure and Flow



Adaptive light source control and pneumoperitoneum pressure and flow regulation, with real-time display and adjustment.

4K UHD Endoscopic Camera System

1 4K UHD Camera Control Unit

- 4K Ultra-High Definition Imaging: Supports 3840 x 2160 and 4096 x 2160.
- Versatile Surgical Applications: Designed for a wide range of surgical procedures across multiple specialties (e.g., general surgery, urology, gynecology, ENT).
- Advanced Image Processing: Incorporates multiple proprietary algorithms for true-to-life tissue reproduction and enhanced visual fidelity within body cavities.
- 4G/5G Remote Video Communication: Enables real-time remote telementoring, surgical consultation, and live streaming.
- Comprehensive Recording & Storage: Features built-in video recording and image capture capabilities, supporting multiple common video and image formats.
- Intuitive User Interface: Equipped with an LCD touchscreen and a user-friendly UI for streamlined, efficient operation.
- Extended Product Lifespan: Engineered for durability with a design life of 10 years.
- Highest Patient Safety Standard: Safety Class I, Type CF, direct cardiac application.

2 Cold Light Source

- LED Light Source: Low-power consumption with a 100,000-hour lifespan. The main unit has a 10-year design life.
- Adaptive Brightness: Features automatic light adjustment that intelligently adapts to the surgical field.
- Broad Compatibility: Compatible with light guide cables from multiple brands.
- Intuitive Control: LED touchscreen with a user-friendly interface.
- Safe Emission Control: No light output when the fiber is disconnected.
- Over-Temperature Protection: Alarm system ensures stable operation.
- Highest Safety Standard: Rated Class I, Type CF for direct cardiac application.

3 FHD Camera Control Unit

- FHD Imaging: Supports 1920x1080.
- Versatile Surgical Applications: Designed for a wide range of surgical procedures across multiple specialties (e.g., general surgery, urology, gynecology, ENT).
- Advanced Image Processing: Incorporates multiple proprietary algorithms for true-to-life tissue reproduction and enhanced visual fidelity within body cavities.
- 4G/5G Remote Video Communication: Enables real-time remote telementoring, surgical consultation, and live streaming.
- Comprehensive Recording & Storage: Features built-in video recording and image capture capabilities, supporting multiple common video and image formats.
- Extended Product Lifespan: Engineered for durability with a design life of 10 years.
- Highest Patient Safety Standard: Safety Class I, Type CF, direct cardiac application.

4 Monitor

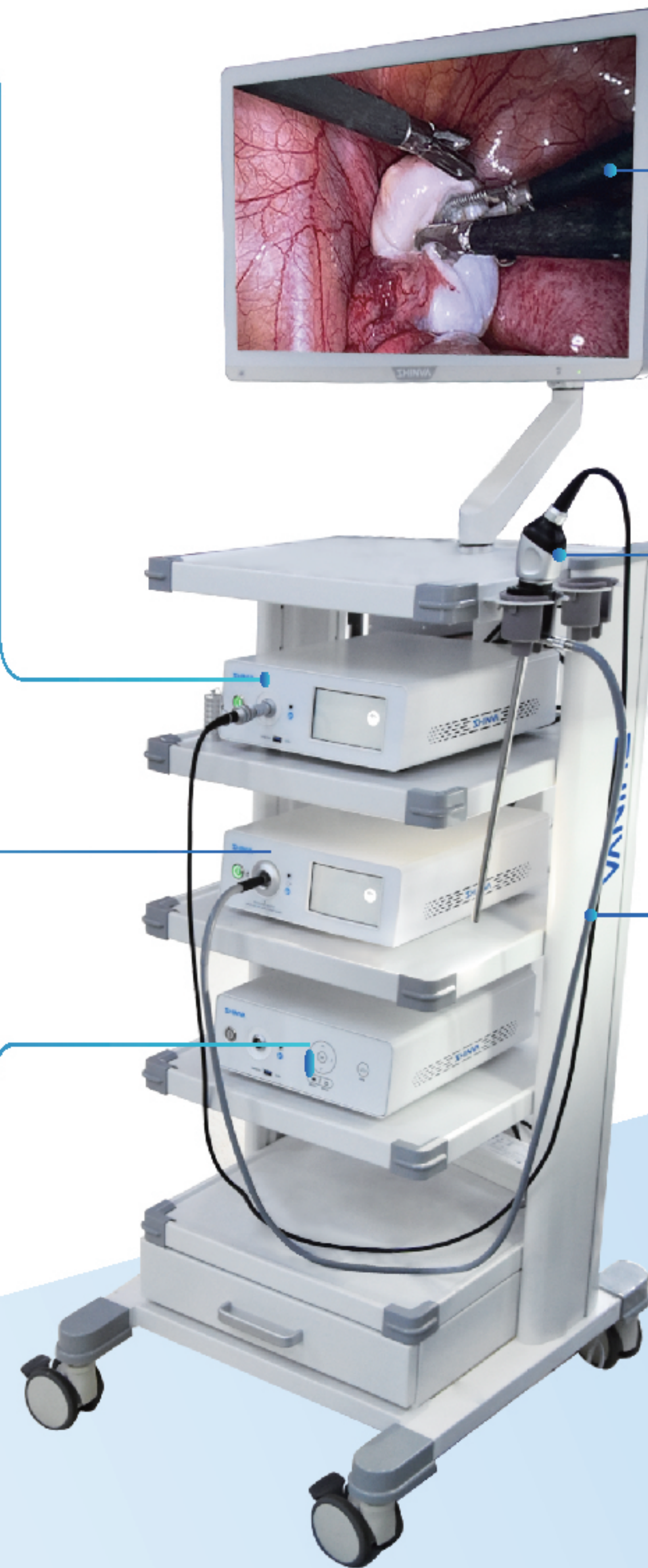
- 4K UHD display, with resolution support for 4096x2160 and 3840x2160, and supporting various aspect ratios such as 16:9 and 17:9;
- Medical-grade display, supporting various specifications and models;
- Input signals: Support multiple signal inputs such as HDMI, DVI, SDI, DP, etc.

5 Camera

- 4K UHD CMOS Sensor: Ensures superior color fidelity and true-to-life image.
- Supporting multiple camera configurations, including MF and AF Camera.
- One-Touch Instant Focus (0.5s) enables rapid targeting and superior clarity.
- IPX8 Waterproof Rating: compatible with various sterilization methods.
- Customizable Button Functions, enhancing intraoperative efficiency.

6 Light Cable

- Material & Performance: Made of imported glass fibers, delivering high brightness and exceptional uniformity.
- Durability: Features high resistance to stretching and bending.
- Sterilization: Compatible with multiple sterilization methods.
- Compatibility: Universal design ensures connection with various brands of light sources and endoscopes



4K ICG Endoscopic Camera System

1 4K ICG Camera Control Unit

- 4K Ultra-HD Resolution: Supports 3840 x 2160 and 4096 x 2160.
- Fluorescence Imaging: Offers realistic marking and accurate surgical guidance.
- Advanced Imaging Algorithms: Delivers a clear, uniform, and bright surgical view.
- Full-Range Autofocus Camera: Enables quick and precise focal adjustment.
- 4G/5G Telemedicine Support: Enables remote surgical mentoring and collaboration.
- Adaptive Scene Brightness: Maintains stable display luminance without flicker.
- Recording & Storage: Supports video/image capture with external media and built-in 2TB HDD.
- Long Service Life: Main unit designed for 10 years of operation.
- 7-inch LED Touchscreen: User-friendly interface for intuitive control.
- Safety: Class I, Type CF rated for direct cardiac application

2 ICG Cold Light Source

- Light Source: Low-power LED + LD hybrid source with a 100,000-hour lifespan. Main console designed for 10-year operation.
- Touchscreen Control: 7-inch LED touchscreen with an intuitive user interface.
- Safe Emission Control: No output when fiber is disconnected.
- Auto-Brightness: Adapts intelligently to the surgical field.
- Over-Temperature Protection: Alarm ensures stable operation.
- Electrical Safety: Class I, Type CF rated for cardiac application

3 Monitor

- 4K UHD display, with resolution support for 4096X2160 and 3840X2160, and supporting various aspect ratios such as 16:9 and 17:9;
- Medical-grade display, supporting various specifications and models;
- Input signals: Support multiple signal inputs such as HDMI, DVI, SDI, DP, etc.

4 ICG Camera

- 4K UHD CMOS Sensor: Ensures superior color fidelity and true-to-life image.
- Supporting multiple camera configurations, including MF, AF Camera and Automatic Zoom Camera.
- One-Touch Instant Focus (0.5s) enables rapid targeting and superior clarity.
- IPX8 Waterproof Rating: compatible with various sterilization methods.
- Customizable Button Functions, enhancing intraoperative efficiency.

5 Light Cable

- Material & Performance: Made of imported glass fibers, delivering high brightness and exceptional uniformity.
- Durability: Features high resistance to stretching and bending.
- Sterilization: Compatible with multiple sterilization methods.
- Compatibility: Universal design ensures connection with various brands of light sources and endoscopes



3D+4K+Fluorescence Endoscopic Camera System

1 3D Endoscopic Image Processor

- 4K Ultra-HD Imaging, Supports 3840×2160 and 4096×2160 resolutions.
- Fusion Imaging for Precision Surgery, Combines 4K, 3D stereoscopy, and fluorescence imaging for multi-dimensional navigation and lesion identification.
- Advanced Image Processing, Proprietary algorithms deliver true-to-life tissue rendering and enhanced image quality.
- Seamless Workflow, One-touch 2D/3D switching adapts to different surgical phases and visual needs.
- Smart Connectivity & Control, 4G/5G real-time remote collaboration, AI visual analysis, and hands-free voice control.
- Recording & Operation, Built-in recording with multiple storage options. Input via foot pedal, button, or touchscreen (LED LCD with intuitive UI).
- Long-Life Design, Main console designed for 10-year service life.



2 3D ICG Cold Light Source

- Multi-Spectrum Lighting: Enhances contrast of vessels and mucosa.
- Auto-Brightness Adjustment: Intelligently adapts to different surgical scenes.
- Low-Temperature, High-CRI Light: Accurately renders true-to-life tissue colors.
- Touchscreen Control: LED LCD touchscreen for intuitive operation.
- Safe Emission Control: No output without fiber connection.
- Long-Life Design: 100,000-hour light module / 10-year console lifespan..



3 3D Monitor

- 4K UHD display, with resolution support for 4096X2160 and 3840X2160, and supporting various aspect ratios such as 16:9 and 17:9;
- Medical-grade display, supporting various specifications and models;
- Input signals: Support multiple signal inputs such as HDMI, DVI, SDI, DP, etc.
- Supports multiple 3D output formats including side-by-side, top-and-bottom, and frame packing

4 3D Fluorescent Endoscope

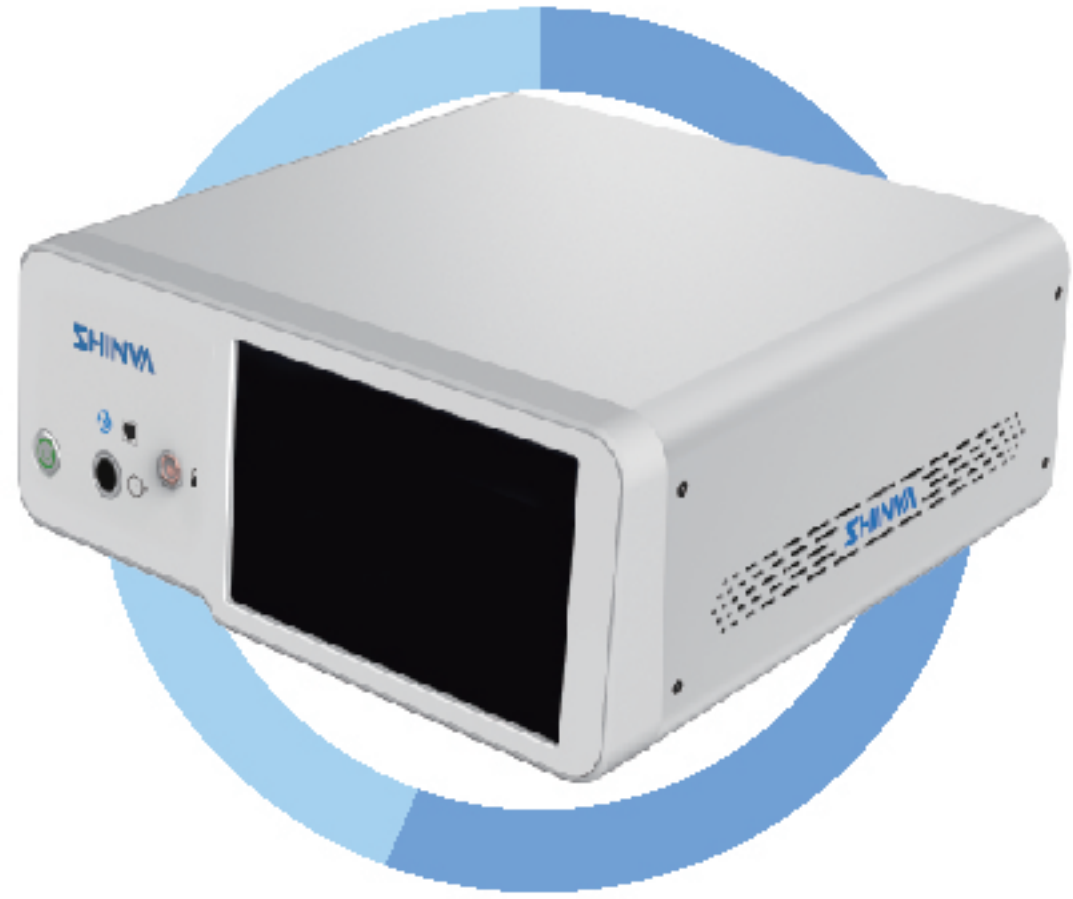
- Dual 4K Image Capture: True-to-life tissue reproduction.
- CMOS Auto-Focus Camera: Continuous clarity with rapid response.
- Ultra-Clear 3D Imaging: Adjustable stereo depth to reduce visual fatigue.
- Built-in Image Stabilization: Ensures steady, clear video output.
- Front-End Heating & Anti-Fog: Maintains clear vision during procedures.
- Auto-Rotation: Keeps horizon-level view from any angle.

5 Light Cable

- Material & Performance: Made of imported glass fibers, delivering high brightness and exceptional uniformity.
- Durability: Features high resistance to stretching and bending.
- Sterilization: Compatible with multiple sterilization methods.
- Compatibility: Universal design ensures connection with various brands of light sources and endoscopes

Intelligent Medical Insufflation System

Used to establish a carbon dioxide pneumoperitoneum during laparoscopic surgery, providing an expanded workspace and optimal visual field for the procedure or examination.



- High-Flow Capacity
- Precision Pressure Control
- Gas Heating
- Multiple Flow Modes
- Smoke Evacuation & Filtration
- Integrated Control

Standard Accessories



Heated Insufflation Tubing



Filter



Pressure Reducing Valve



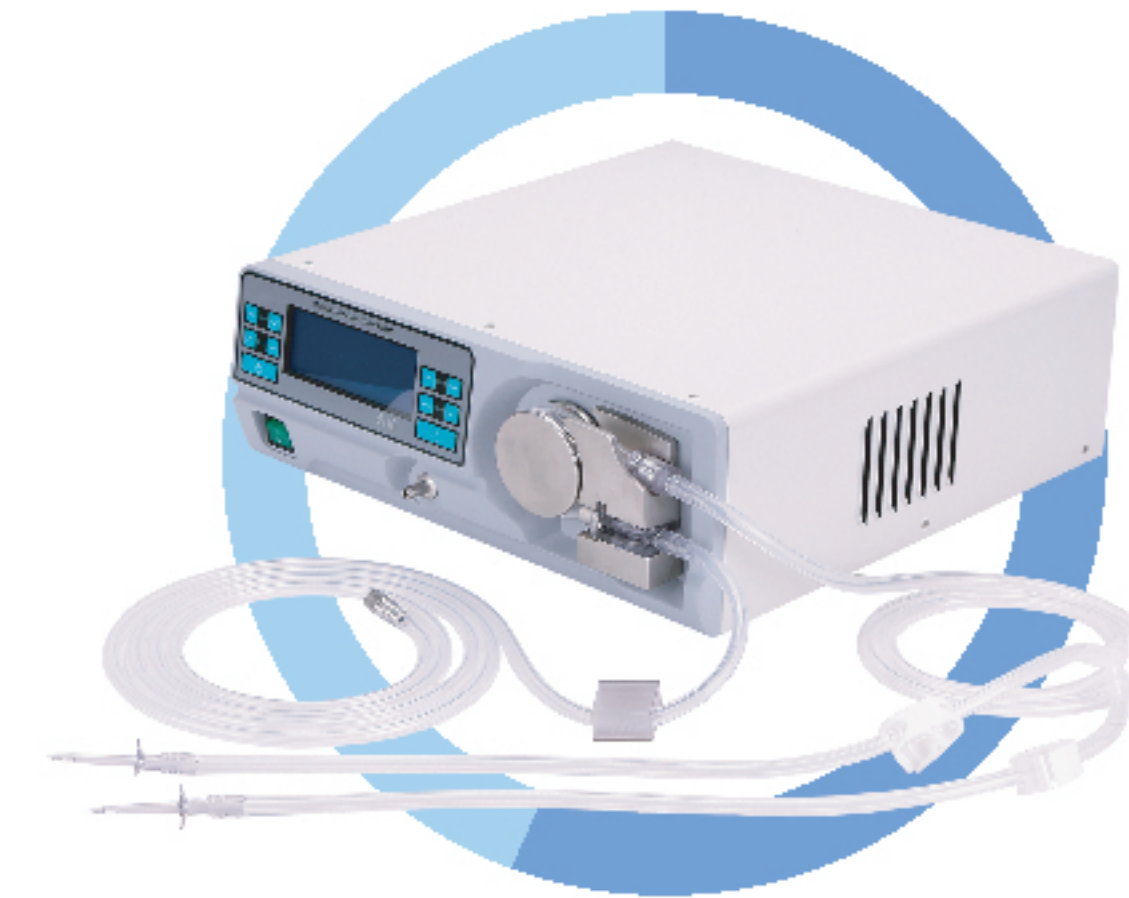
Gas Cylinder Supply Hose



Central Gas Supply Pipeline

Irrigation&suction pump

Use for irrigation and suction in all the endoscopic surgeries such as laparoscopy, arthroscopy, hysteroscopy and ureteroscopy etc.



Features and Benefits

- Precision control of pressure and flow
- Intelligent monitoring
- Wide scope of application
- Silence

Irrigation&suction Pump for Laparoscopy

Wash and suction in laparoscopic surgeries.

No need gas-liquid to change, reduce the risk of surgery.



Features and Benefits

- Irrigate and suction
- Large flow
- Adjusted irrigate suction pressure
- Reflux protection

Electrosurgical Cautery

Cutting and coagulation (hemostasis) of human tissue during surgical procedures.



Features and Benefits

- Precise Cutting
- Rapid Coagulation
- Reduced tissue trauma
- Reduced Adhesion

4K Video Recording System

For the acquisition, management, and editing of surgical images



Touchscreen & Physical Keys



Image Acquisition & Management



Patient Data Management

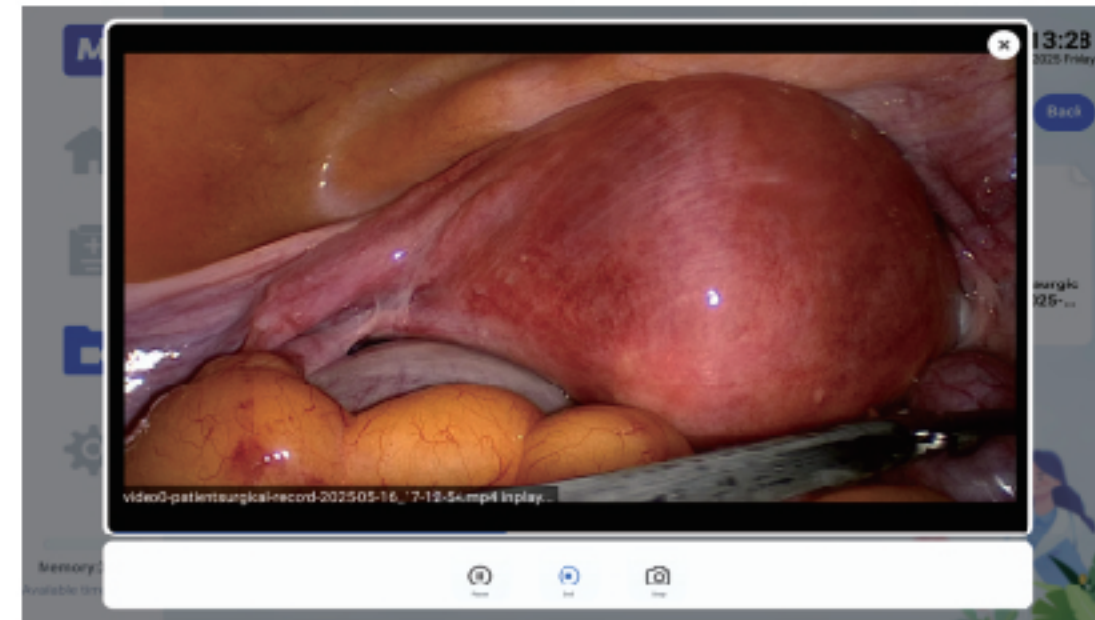
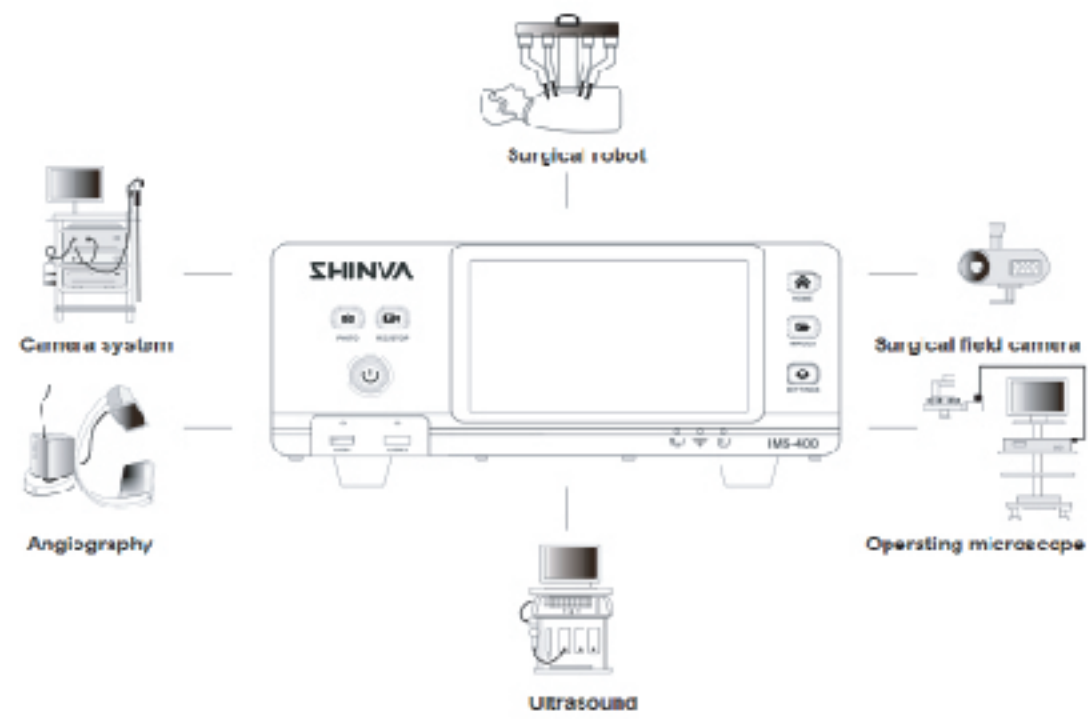


Internal + Expandable

Features and Benefits

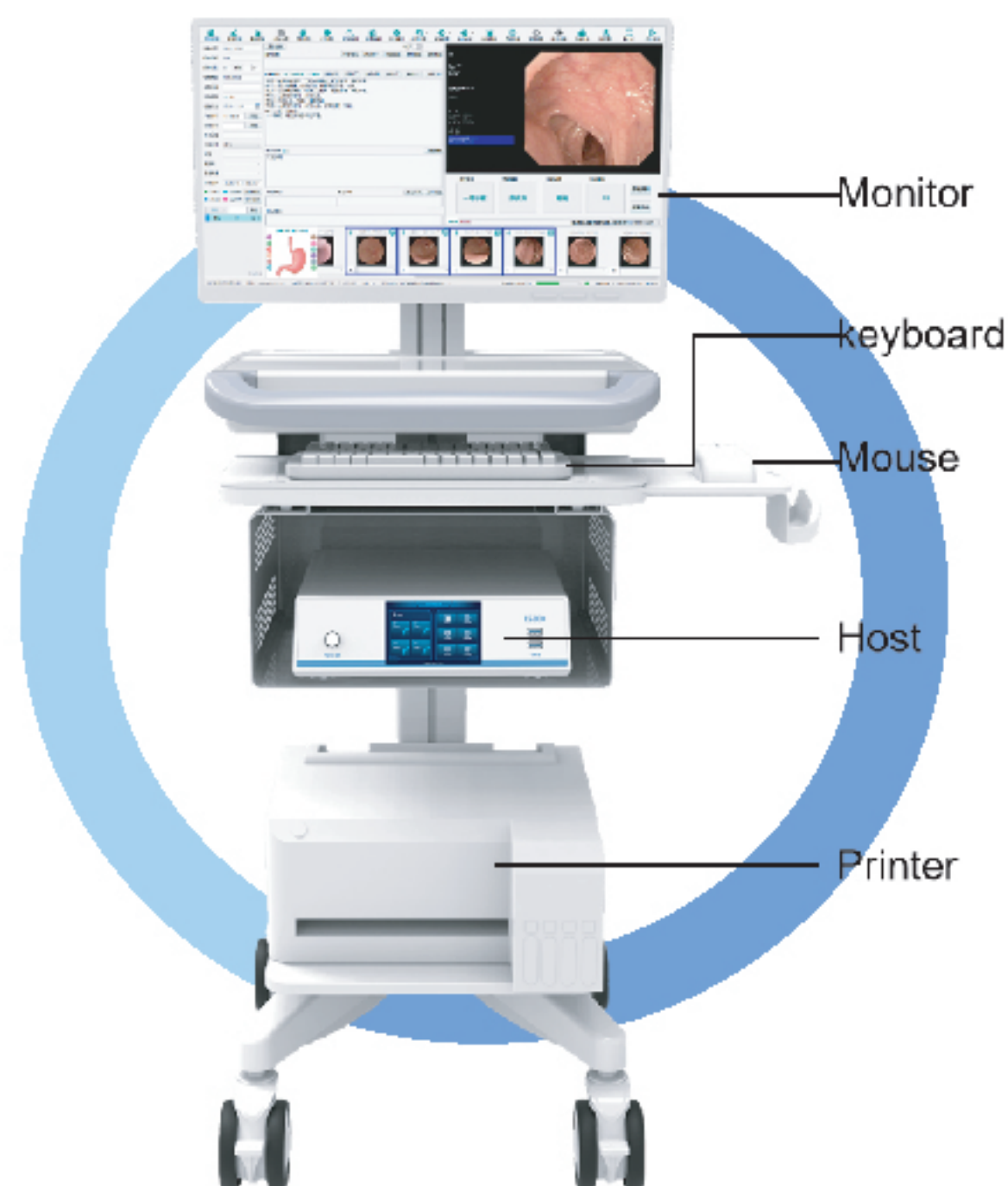
1. Suitable for a variety of scenarios, including operating rooms, endoscopy centers, training classrooms, and academic conference centers.

2. Enables 4K video recording and high-resolution image capture, delivering clear visuals to support precise diagnosis.



Medical Imaging Workstation

The integrated management of endoscope image acquisition, recording, storage, transmission, and reporting



Suitable for all clinical departments



Unified functional interface



Color Report Film Printing



Smart Data Management

Camera System

Product configuration and parameters

FHD camera control unit



Code	ZP5001
Model & Specification	PF-1
Effective Pixels	1920X1080
Image processing function	Five surgical scenarios Auto-White Balance The image can be 5 times enlarged or 0.5 times reduced Dark improvement High brightness suppression Moire removal Double Endoscopy display
SNR	56 dB
Total Noise	≤50dB
Total Input	DVI, 3G-SDI
Total Output	3G-SDI, HDMI, DVI, USB3.0
Shock-proof Type	Class I CF type
Power Supply	220V~50Hz
Size (L×W×H)	326mm X 300mm X 105mm

4K camera control unit



Basic version

Code	ZP5605
Model & Specification	PU-7-C
Effective Pixels	3840×2160
Image processing function	Ten surgical scenarios Auto-White balance 9 times enlarged Defog Anti-overflow Extinction Dynamic noise reduction Dark Enhancement
SNR	50 dB
Total Noise	≤50dB(A)
Total Output	3G-SDI, HDMI 2.0, DVI, USB3.0
Shock-proof Type	Class I CF type
Power Supply	220V~50Hz
Size (L×W×H)	345mm X 341mm X 140mm



Standard version

Code	ZP5003
Model & Specification	PU-3
Effective Pixels	3840×2160/4096×2160
Image processing function	Ten surgical scenarios Auto-White Balance The image can be 5 times enlarged or 0.5 time reduced Dark improvement High brightness suppression Moire removal Double Endoscope display Defogging Detail filter Anti-red overflow Picture in Picture Function
SNR	56 dB
Total Noise	≤50dB(A)
Total Input	DVI, 3G-SDI
Total Output	3G-SDI, 12G-SDI, HDMI 2.0, 4*3G-SDI, DVI, USB3.0
Shock-proof Type	Class I CF type
Power Supply	220V~50Hz
Size (L×W×H)	326mm X 300mm X 105mm



Premium version

Code	ZP5016
Model & Specification	PU-9
Effective Pixels	3840×2160/4096×2160
Image processing function	Ten surgical scenarios Auto-White Balance The image can be 5 times enlarged or 0.5 time reduced Dark improvement High brightness suppression Moire removal Double Endoscope display Defogging Detail filter Anti-red overflow Picture in Picture Function
SNR	56 dB
Total Noise	≤ 50dB(A)
Total Input	DVI, 3G-SDI, Foot Pedal, Voice
Total Output	3G-SDI, 12G-SDI, DP, 4*3G-SDI, HDMI, DVI, CVBS, S-Video, USB3.0
Storage method	External storage (external USB drive),internal storage (built-in 2T hard drive)
Shock-proof Type	Class I CF type
Power Supply	220V~50Hz
Size (L×W×H)	326mm X 300mm X 105mm

4K fluorescence (ICG/NIR) camera control unit



Standard version

Code	ZP5007
Model & Specification	PU-4
Effective Pixels	3840×2160/4096×2160
Image processing function	Fluorescence function Automatic white balance Ten surgical scenarios Dark improvement High brightness suppression Anti-red overflow Dynamic noise reduction Defogging Detail filter Moire removal Double Endoscope display The image can be 5 times enlarged or 0.5 times reduced
SNR	54dB
Total Noise	≤ 55 dB(A)
Total Input	DVI, 3G-SDI, Foot Pedal, Voice
Total Output	HDMI, DVI, DP, 12G-SDI, 4*3G-SDI, 3G-SDI, CVBS, S-Video, USB3.0
Storage method	External storage (external USB drive),internal storage (built-in 2T hard drive)
Shock-proof Type	Class I CF type
Power Supply	220V~50Hz
Size (L×W×H)	345mm×341mm×140mm



Basic version

Code	ZP5014
Model & Specification	PU-4-1
Effective Pixels	3840×2160
Image processing function	Fluorescence function Automatic white balance Ten surgical scenarios Dark improvement Dynamic noise reduction Moire removal The image can be 5 times enlarged or 0.5 times reduced
SNR	54dB
Total Noise	≤ 50dB(A)
Total Output	HDMI, DVI, 3G-SDI, CVBS, S-Video, USB3.0
Shock-proof Type	Class I CF type
Power Supply	220V~50Hz
Size (L×W×H)	345mm×341mm×140mm

4K+3D Fluorescence(ICG/NIR) camera control unit



Standard version

CodeCode	ZP5009
Model & Specification	EU-1
Effective Pixels	3840×2160/4096×2160
Image processing function	Fluorescence function Automatic white balance Ten surgical scenarios Dark improvement High brightness suppression Anti-red overflow Defogging Detail filter Double Endoscopy display Exposure Mode Settings Color Gamut Settings Screen display 2D-3D one click switching The image can be 25 times enlarged or 0.25times reduced
Total Input	3G-SDI, DVI, AUDIO, DVI video input, AUDIO input
Total Output	HDMI, DVI, DP, 12G-SDI, 3G-SDI, CVBS, S-Video, USB3.0
Storage method	External storage (external USB drive),internal storage (built-in 2T hard drive)
Shock-proof Type	Class I CF type
Power supply	220V~50Hz
Size (L×W×H)	345mm×354mm×140mm



Premium version

CodeCode	ZP5017
Model & Specification	EU-2
Effective Pixels	3840×2160/4096×2160
Image processing function	Fluorescence function Automatic white balance Ten surgical scenarios Dark improvement High brightness suppression Anti-red overflow Defogging Detail filter Double Endoscopy display Exposure Mode Settings Color Gamut Settings Surgical Instrument Detection Surgical Sponge Detection Screen display 2D-3D one click switching The image can be 25 times enlarged or 0.25times reduced
Compatible	Compatible with both 2D and 3D camera
Total Input	3G-SDI, DVI, AUDIO, DVI video input, AUDIO input
Total Output	HDMI, DVI, DP, 12G-SDI, 3G-SDI, CVBS, S-Video, USB3.0
Storage method	External storage (external USB drive),internal storage (built-in 2T hard drive)
Shock-proof Type	Class I CF type
Power supply	220V~50Hz
Size (L×W×H)	345mm×354mm×140mm

FHD Camera Head




Code	ZP5101
Model & Specification	CF-1
Effective Pixels	1920×1080
Focal length	Optical interface for F22,F13-32 focal distance attached (suitable for all the surgeries)
Function of the button	Can customize the button function, easy to use
Waterproofing grade	IPX8, support low temperature plasma sterilization
Camera cable	2.9m in ch highly flexible special cable

4K Camera Head




Code	ZP5102/ZP5110	ZP5638	ZP5113	ZP5103	ZP5104	ZP5114
Model & Specification	CU-2	CU-7-C	CU-9	CU-3	CU-4	CU-10
Effective Pixels	3840×2160/4096×2160					
Focal length	F13~32			F22	F28	
Auto-focusing Function	No			Yes		
Function of the button	Can customize the button function, easy to use					
Waterproofing grade	IPX8, support low temperature plasma sterilization					
Camera cable	2.9m in ch highly flexible special cable					


4K Fluorescence(ICG/NIR) Camera Head

	Code	ZP5106	ZP5107	ZP5109
	Model & Specification	CU-5	CU-6	CU-7
	Effective Pixels	3840×2160/4096×2160		
	Focal length	F13-32	F28	F14-F32
	Auto-focusing Function	No	Yes	
	Function of the button	Can customize the button function, easy to use		
	Waterproofing grade	IPX8, support low temperature plasma sterilization		
	Camera cable	2.9m inch highly flexible special cable		


3D Fluorescence (ICG/NIR) camera Head

	Code	ZP5111
	Model & Specification	EC-1
	Effective Pixels	3840×2160/4096×2160
	Function	Automatic Image Rotation Function Image Stabilization Function Heated Anti-Fogging Design for Sustained Clear Vision Stereo Adaptive Technology for a Dizziness-Free Experience Dual CMOS Auto-Focus-Free Cameras for All-Time Sharpness Dual 4K Pixel Acquisition for True-to-Life Cavity Color Reproduction
	Function of the button	Can customize the button function, easy to use
	Waterproofing grade	IPX8, support low temperature plasma sterilization
	Camera cable	2.9m inch highly flexible special cable


Cold light source

	Code	ZP5307
	Model & Specification	L80-1
	Color temperature	3000K~7000K
	Output total optical flux	1000lm
	Light Output Protection	Light emission is prevented unless the fiber is properly connected
	Anti electric shock type	Class I CF type
	Power Supply	220V~,50Hz
	Size(L×W×H)	326mm×300mm×105mm

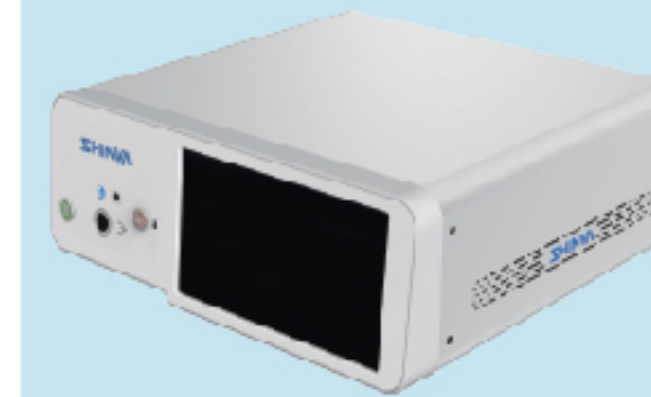
Fluorescence cold light source

	Code	ZP5308
	Model specifications	L130-1
	Light source mode	White light, fluorescence
	Color temperature	3000K-7000K
	Output total optical flux	700lm
	Light Output Protection	Light emission is prevented unless the fiber is properly connected
	Anti electric shock type	Class I CF type
	Power Supply	220V~, 50Hz
	Size	345mm×341mm×140mm


3D Fluorescence cold light source

	Code	ZP5304
	Model specifications	L105-1
	Light source mode	White light, fluorescence
	Color temperature	3000K-7000K
	Output total optical flux	700lm
	Light Output Protection	Light emission is prevented unless the fiber is properly connected
	Anti electric shock type	Class I CF type
	Power Supply	220V~, 50Hz
	Size	345mm×354mm×140mm


Medical Insufflator

	Code	ZP5527
	Model specifications	P50-1
	Flow setting range	0-50L/min
	Pressure setting range	1-30mmHg
	Gas supply method	Support central gas supply and gas bottle supply
	Insufflation Tube Type	Heated or Non-heated
	Machine noise	≤50dB
	power supply	220V~ 50Hz
	Size	347mm×430mm×160mm


Irrigation&suction pump

	Code	ZP5507
	Model specifications	JRG-CX
	Irrigation Flow Setting Range	Pressure: 50~700 mmHg Flow: 10~1500 L/min
	Suction Pressure Setting Range	Pressure: 15~400 mmHg Flow: 1000~30000 ml/min
	Noise	≤70dB
	Light Output Protection	Light emission is prevented unless the fiber is properly connected
	Power Supply	220V~, 50Hz
	Size	330mm×360mm×140mm


Irrigation&suction pump for Laparoscopy

	Code	ZP5509
	Model specifications	JRJ-I
	Pressure	Pos-pressure: 10~50Kpa, Neg-pressure: -50~-10Kpa
	Max wash volume	≥1000mL/min
	Max inhale volume	≥1500mL/min
	Machine noise	≤70dB
	power supply	220V~ 50Hz
	Size	330mm×360mm×140mm


Electrosurgical Cautery

	Code	HS00002	HS10001
	Model specifications	XGP-D-I	XGP-D-II
	Surgical Mode	Pure Cut, Blend Cut, High Cut	Pure Cut, High Cut, Blend 1, Blend 2
		Soft Coagulation, Forced Coagulation, Spray Coagulation, Bipolar Coagulation	Monopolar: Soft, Forced Spray Bipolar: Macrobipolar, Standard, Microbipolar
	Operating Frequency	Electrosurgical Cutting: 390KHz	Electrosurgical Cutting: 360KHz
		Soft, Bipolar Coagulation: 390KHz Forced, Spray Coagulation: 400KHz	Soft, Bipolar Coagulation: 360KHz Forced, Spray Coagulation: 412KHz
	Function	<ol style="list-style-type: none"> Multiple Modes: Monopolar cut/coagulation & bipolar coagulation. Advanced Bipolar: Features automatic control & precision hemostasis. Auto Power Adjust: Adjusts power based on tissue impedance. Auto Bipolar Control: Delayed start & auto-stop when tissue is dry. Patient Plate Monitor: Prevents burns via real-time monitoring. Bipolar Low Voltage: Prevents sparking. For Multiple Specialties: E.g., general, neuro, ortho surgery & laparoscopy. 	
	Power	Cutting: 5~300W, Coagulation: 5~120W	Cutting: 1~350W, Coagulation: 1~120W
power supply	220V/50Hz	220V/50Hz	
Size	440x160x360mm	440x160x360mm	


light cable

	Code	ZP5312/ZP5305/JP4101	ZP5303
	Model specifications	White light	Fluorescence/3D Fluorescence
		Luminous diameter 4.8mm, length 3m (length can be customized)	
	Material quality	High temperature and high pressure disinfection and sterilization	
Interface	Compatible with STORZ, Richard Wolf, and domestic cold light sources		


4K UHD LCD monitor

	Code	ZP5544/JP5500(FHD) ZP5541/JP5501(4K)	ZP5528/JP5504	ZP5551	ZP5542
	Size	27 inch	32 inch	3D 32 inch	55 inch
	Resolving power	3840×2160/4096×2160			
	Aspect ratio	16:9/17:9			
	Input	HDMI, 3G-SDI, 12G-SDI, DP, DVI, USB			
	Visual angle	178°			
	Screen	Protective glass, anti fingerprint, anti reflection; Has vascular enhancement function			


Endoscope trolley

	Code	ZP5105	ZP5546
	Model specifications	YB-997T	YB-996-55
	Size	650×600×1300	770×580×1470
	Functional configuration	Double column with 5 layers, including drawers and displays Bracket, camera holder, cable management box, socket.	Single column with 4 layers, including drawers and displays Bracket, camera holder, Cable box insertion, compatible with 32 and 55 inch monitors.

Video Recording System

	Code	ZP5540
	Model specifications	XH-400
	Function	<p>Video Recording & Processing: Supports HD, 4K, and 3D image recording and processing with a resolution up to 4096×2160.</p> <p>Storage: Features 1TB internal SSD and expandable external storage support.</p> <p>Control Options: Compatible with voice command and foot pedal control.</p> <p>Connectivity: Equipped with HDMI, DVI, 3G-SDI, and 12G-SDI input/output ports.</p> <p>Data Management: Built-in system for managing patient data and system files, including registration, review, and configuration</p>
	power supply	100-240V~ 50/60Hz
	Size	310mm×138mm×310mm

Medical Imaging Workstation

	Code	ZP5506	ZP5511
	Pixels	1920×1080	3840×2160
	Function	<ol style="list-style-type: none"> User Management: Edit basic user profiles and input patient information. Image Management: 4K Ultra HD quality supports real-time dynamic imaging, report editing, video recording, playback, and cropping of captured images. Acquisition Controls: Image capture via foot switch, hotkeys, or mouse. Color Reporting: Compatible with various printer types and allows custom design of image layouts. Printer Switching: Enables free switching between different printers when printing reports. Diagnostic Templates: Includes department-specific diagnostic templates to assist users in rapid report editing 	