

# SHINVA

Better Innovation Better Lives



SHINVA MEDICAL INSTRUMENT CO.,LTD.  
Address: Xinhua Medical Scientific Zone, Zibo New &  
Hi-Tech Industrial Development Zone, 255086, Zibo,  
Shandong, P.R.China  
Sales Tel: +86 533 3587720  
Email: sales@shinva.com  
Website: www.shinva.com



# SHINVA

Better Innovation Better Lives



	+5.5°	120 kV
	+950	200 mA
	+150	8 s

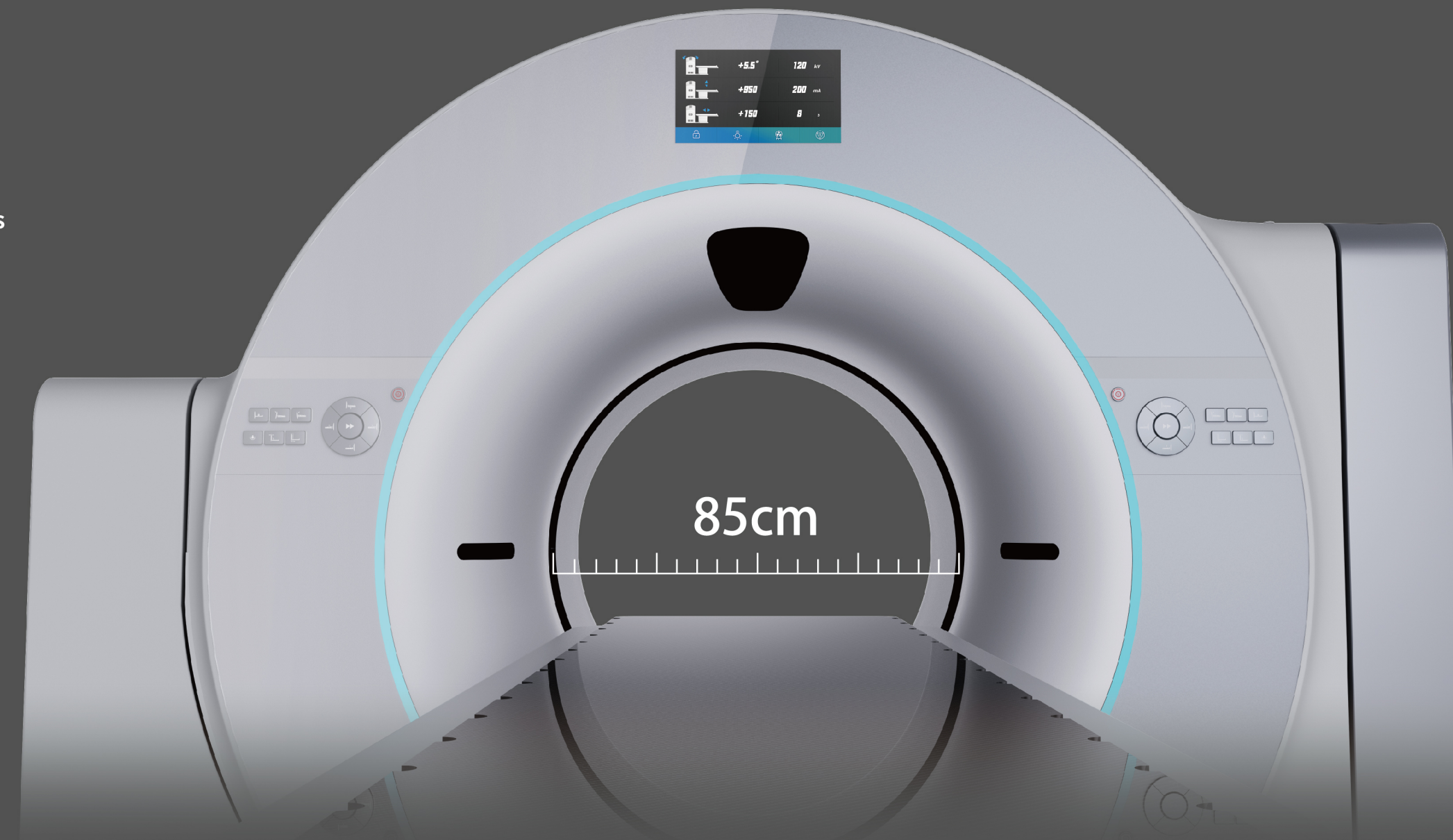
## XHCT-16 Big Bore CT



# SHINVA

## Precision Craftsmanship | Versatile Applications

- / Accurate Radiotherapy Positioning
- / Particle Implantation
- / Interventional Therapy
- / Puncture Surgery



# SHINVA

## High-Definition Imaging | Precision Positioning

- / 17 LP/cm Ultra-High Spatial Resolution
- / Diagnostic-Grade HD CT Imaging
- / Ultra-Thin Slice Thickness
- / Ultra-High Positioning Accuracy



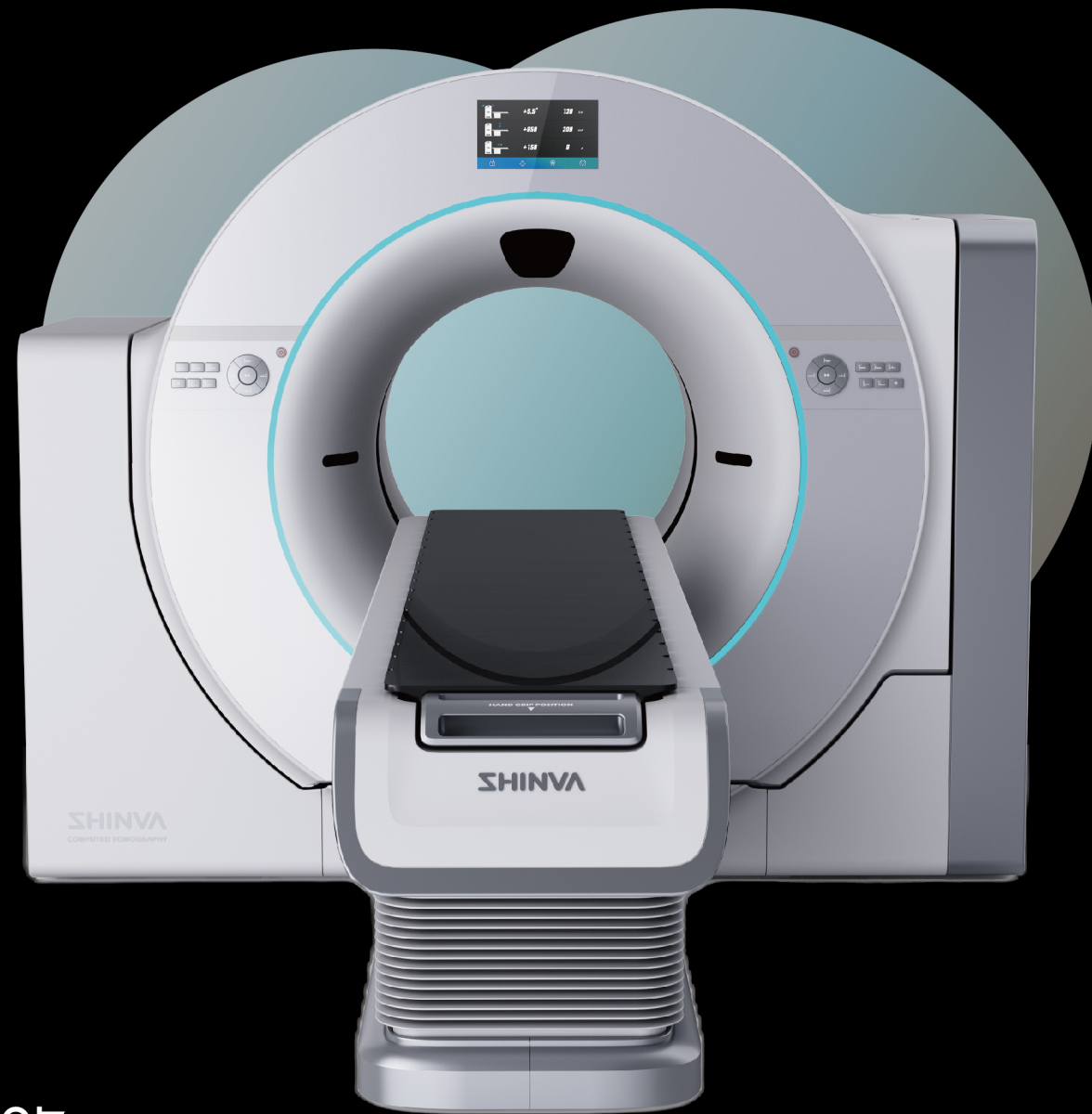
# SHINVA

## Extra-Large Field | True-to-Scale Visualization

- / 85cm ultra-large display field, visualizing broader anatomical structures and improving tumor-to-tissue relationship assessment.
- / Delivers more comprehensive CT baseline image data, fully accounting for patient/stent-induced dose effects to enhance dose distribution calculation accuracy.

## High Heat Capacity | Continuous Scanning

- / Equipped with an ultra-high heat capacity X-ray tube (configured according to user needs), delivering significantly improved heat dissipation. Enables seamless clinical multiphase contrast-enhanced scanning without tube cooling delays.



## Radiotherapy Positioning Flat Table

- / Full carbon fiber flat panel with navigation index system, compatible with major Medical Linear Accelerators.
- / TG66-compliant scanning table features independent vertical/longitudinal movement, designed for precision radiotherapy positioning.



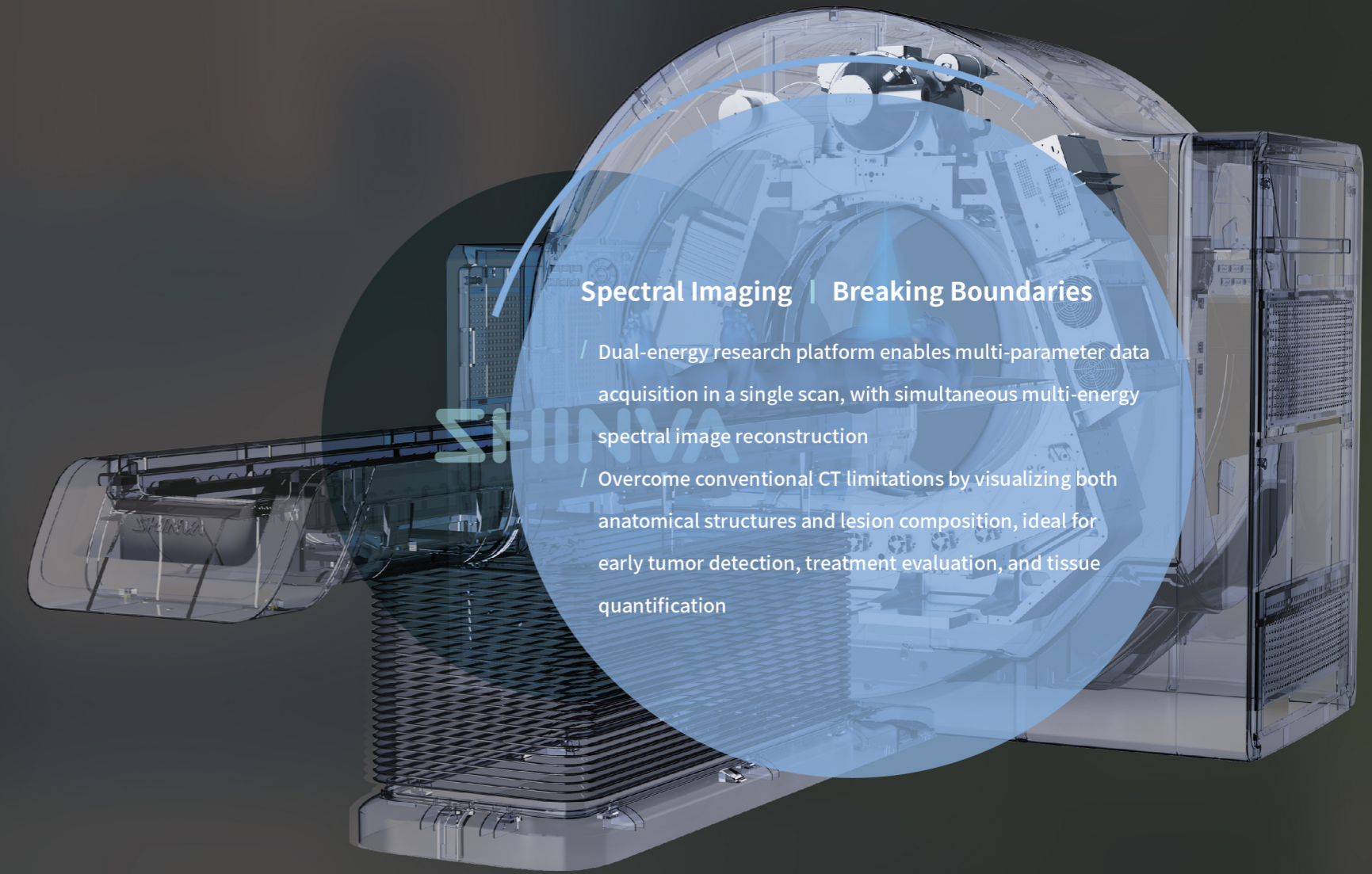
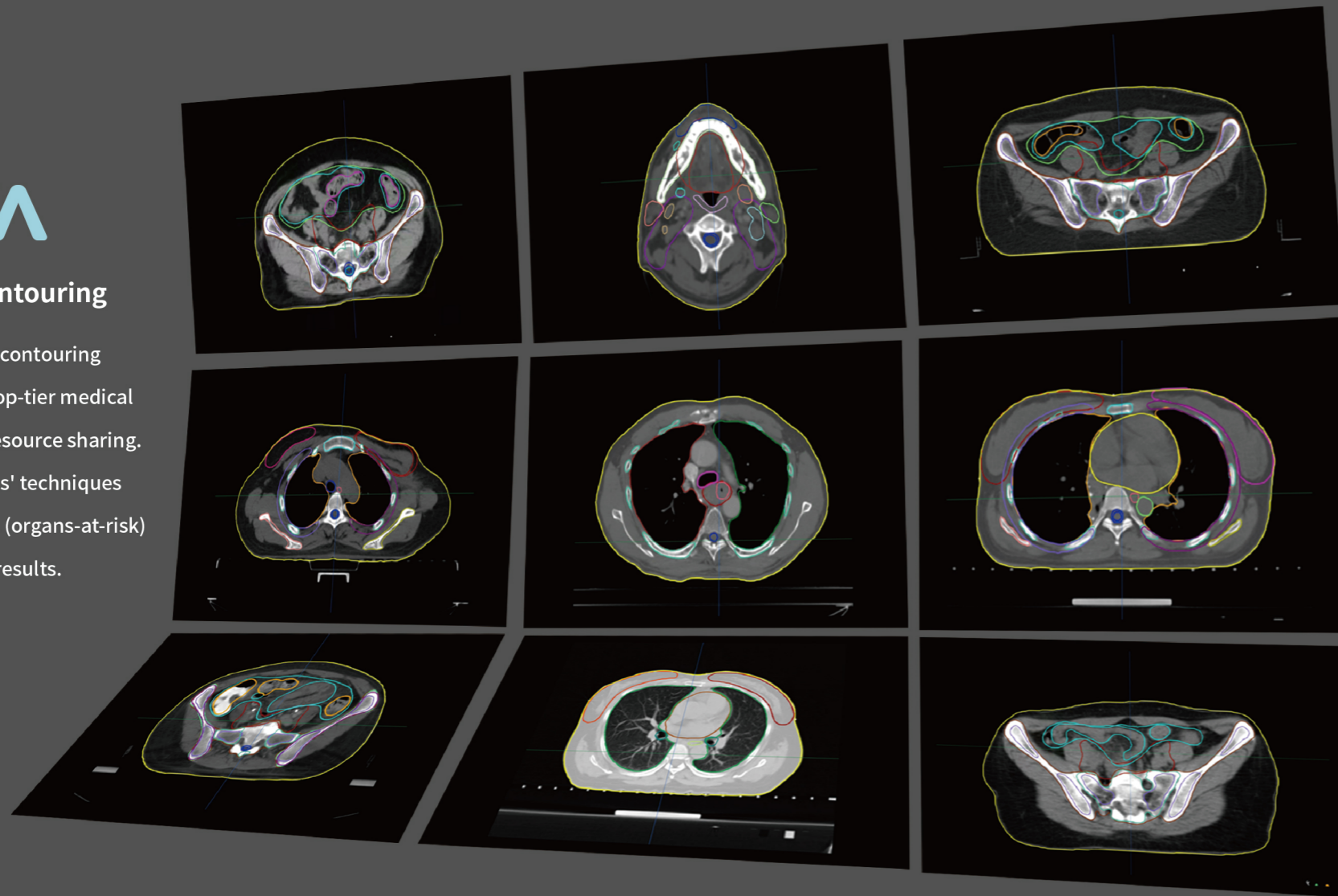
## 4D Imaging | Respiratory Management

- / Tri-camera system precisely tracks tumor morphology/position during all respiratory phases for accurate treatment planning.
- / Prevent tumor missing and healthy tissue overdosing, especially effective for mobile tumors (lung/liver/breast cancers). Safer and more reliable.

# SHINVA

## AI-Driven | Auto-Contouring

- / Powered by AI-based auto-contouring software developed with top-tier medical institutions for premium resource sharing.
- / Learn from expert clinicians' techniques to auto-contour 100+ OARs (organs-at-risk) with anatomically precise results.



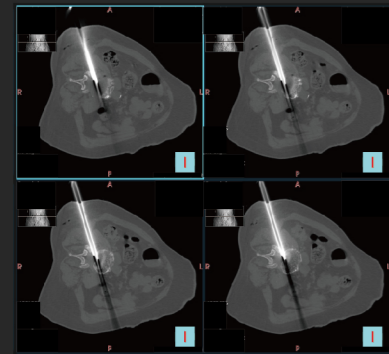
## Spectral Imaging | Breaking Boundaries

- / Dual-energy research platform enables multi-parameter data acquisition in a single scan, with simultaneous multi-energy spectral image reconstruction
- / Overcome conventional CT limitations by visualizing both anatomical structures and lesion composition, ideal for early tumor detection, treatment evaluation, and tissue quantification

# SHINVA

## Smart Guidance | Precision Navigation

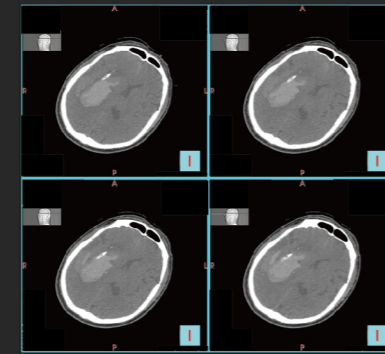
- / Intelligent Operating Platform: Simplified interface with optimized workflow, full-process guidance to prevent misoperation, featuring auto noise-reduction/enhancement/reconstruction
- / Real-Time Surgical Guidance: Live lesion positioning with instant 3D image reconstruction for intuitive visualization
- / Multi-Baseline Positioning: SIM-based scanning protocol reduces time and rescans while improving efficiency
- / QC System: Dedicated quality control protocols with auto-analysis and one-click report generation



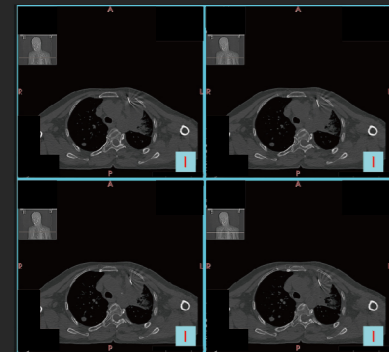
Intervertebral Foraminoscopy Guidance



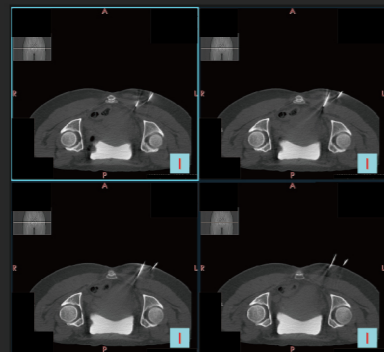
Localization Image-guided Puncture



Intracranial Puncture



Thoracic Puncture



Pelvic Interventional Surgery



# SHINVA

## Mobile Laser Simulation Positioning System Tri-axis adjustable with auto-calibration

- / Assist tumor patient positioning/repositioning
- / Dual-color (red/green) laser compatible with major TPS
- / Automatically acquire patient repositioning data

SHINVA



SHINVA 新华医疗

